

Sina App Engine

- a distributed web solution on cloud



SAE Team

<http://t.sina.com.cn/SinaAppEngine>

SUMMARY

- **Why we do**
- **Our destination**
- **Our concerns**
- **What we done**
- **What we will do**



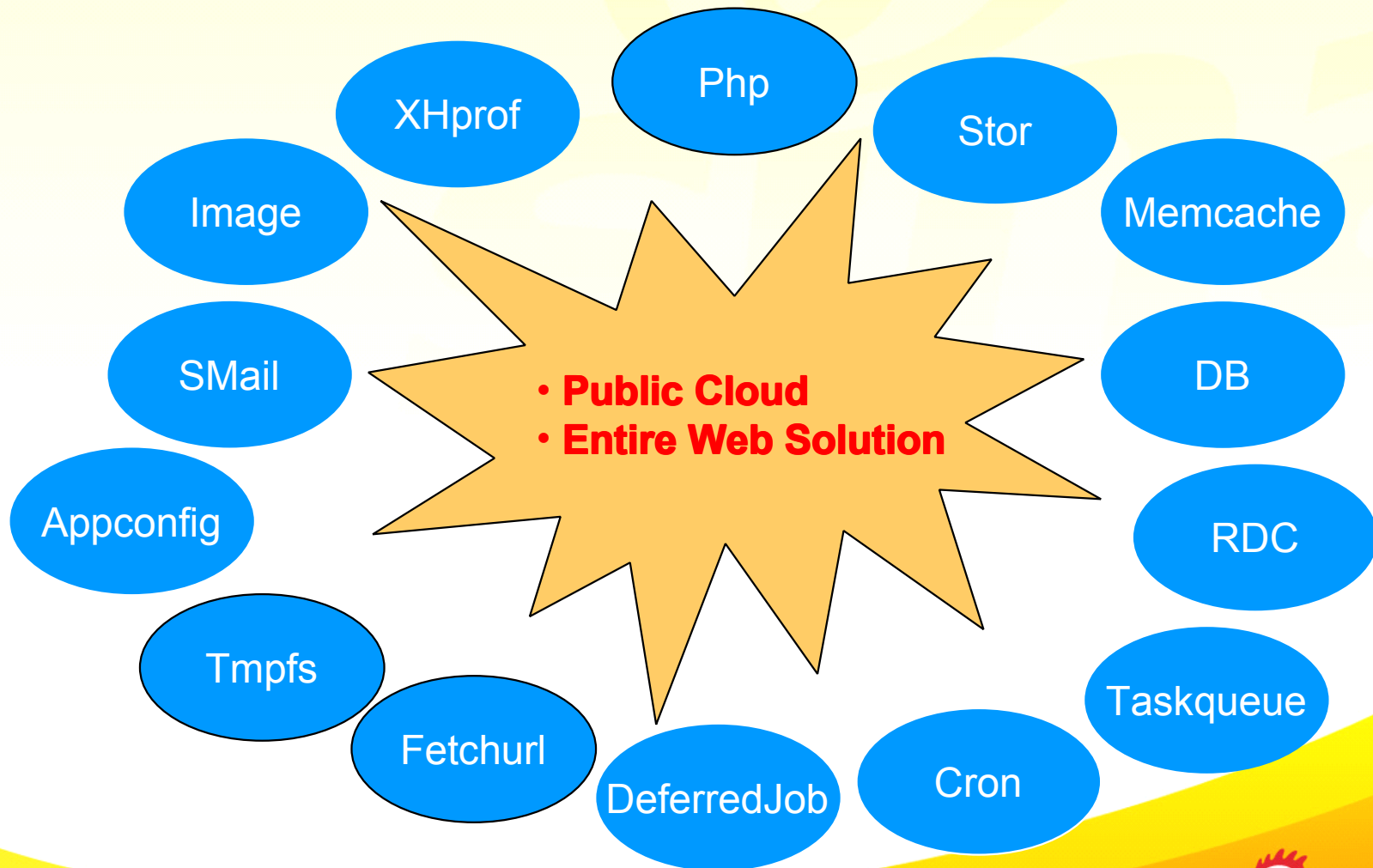
Why we do

The reason is quite simple:

- great project comes from coincidence
- cloud computing can make money
- blank space of internal market
- we have technical advantage



Our destination





Our destination

What is differences between SAE & VPS:

- focus on web developer **VS** no special user
- service user **VS** device tenant
- entire distributed web solution **VS** only basic service
- strong SLA **VS** week SLA
- pay for usage **VS** prepayment



Our concerns

- static scalability & dynamical scalability
- isolation & security
- high availability (computing & data)



What we done

2009.11.3 birthday sae.sina.com.cn

Sina App Engine
<http://sae.sina.com.cn> ALPHA2

应用管理 ▾ | 开发资源 ▾ | 意见反馈 | 设置 | 退出

搜索

[SAE是什么](#) | [为何选择SAE](#) | [开始使用SAE](#)

Why Sina App Engine ?

✓ 易用
在线管理

✓ 可靠
全冗余设计

✓ 高效
分布式架构

✓ 安全
多重保障

开发更便捷

- 在线创建、配置、调优应用
- 操作简单的多平台版本SDK
- 友好的API调用接口
- 方便的团队协作管理
- 可在线检索的服务日志

运行更高效

- 无限水平扩展设计
- 分布式数据存储服务
- 键值分布式缓存服务
- 众多可选用的增强服务
- 同步/异步通讯支持

服务更可靠

- 基于成熟的LAMP架构
- 前端自动负载均衡
- SandBox保证的良好隔离
- 数据全冗余分布式架构
- 可靠安全的数据传输存储

**立即下载**
V1.0.2
Windows/Linux
Sina App Engine SDK

**立即下载**
.CHM 49K
SAE API Manual 100201

欢迎回来,kobe

你已经登入为 [kobe\(sprewellkobe@163.com\)](#)
你可以开始管理应用,设置个人资料
或者安全退出此帐号

应用管理 | [ctest](#) | [kobe](#) | [resource](#) | [更多...](#)

开发资源 | [SDK下载](#) | [文档中心](#) | [API文档](#) | [FAQ](#)

意见反馈 | [寻求帮助](#) | [反馈BUG](#) | [提交建议](#) | [开发博客](#) | [新浪微博](#)

Copyright © 2010 Sina Inc. All rights reserved.

kobe,欢迎使用 Sina App Engine

上次登录: 2010-08-04 10:46:53 IP: 10.217.12.31

[退出](#)

[TOP](#)



What we done

Timeline:

Version	Date	Functions
SAE regroup	2009.8.1	start coding
SAE alpha1	2009.11.3	http;cron;mysql;mc;sdk
SAE alpha2	2010.2.1	mail;xhprof;tmpfs;appconfig;image
SAE beta	2010.8.**	cloud beans;taskqueue;rdc;deferredjob;https

Support internal projects:

30+ weibo apps run on SAE

Support external projects:

2000+ web developers on SAE

1500+ apps on SAE

400+ deploy actions every day



What we done

Preview:

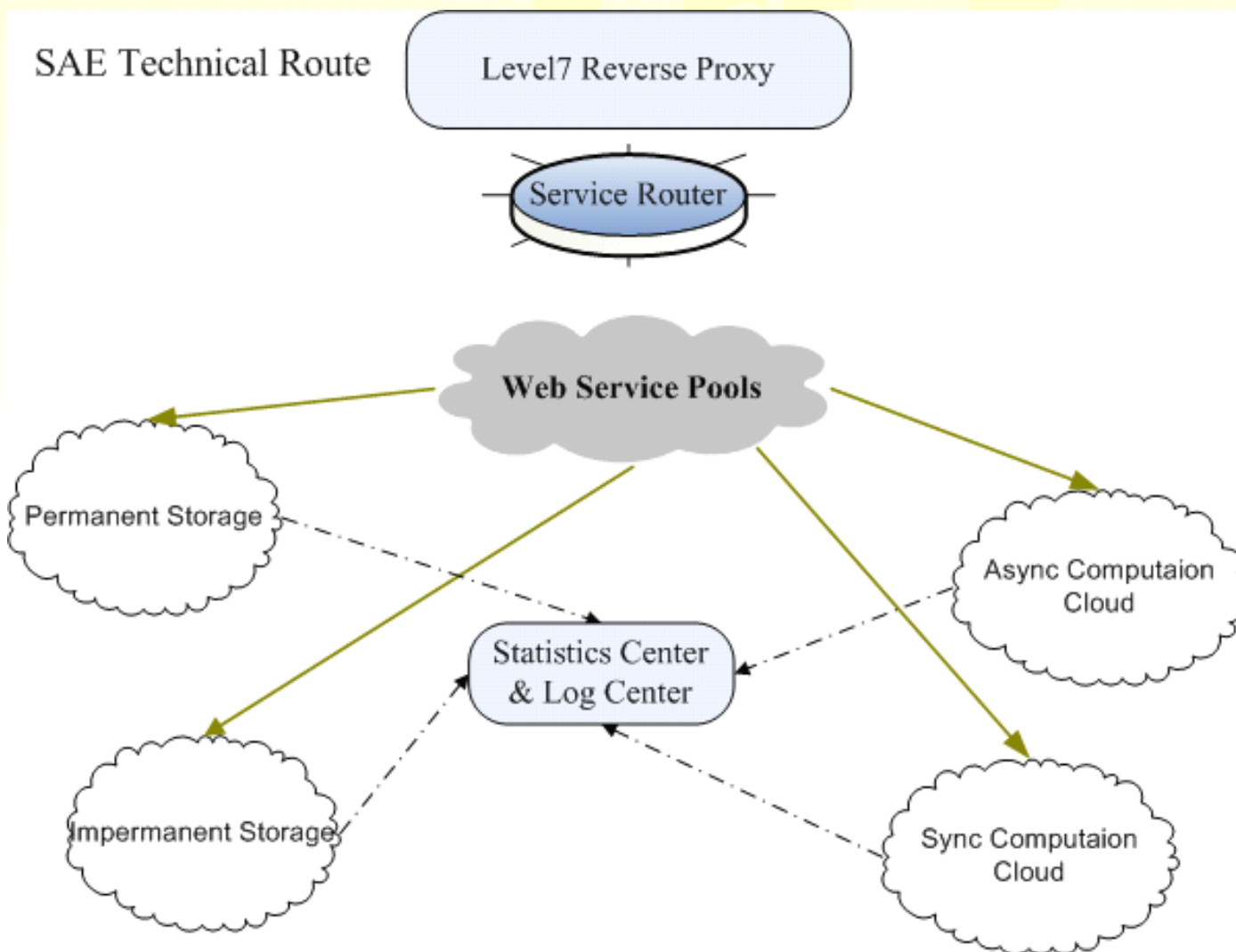
Sina Weibo Developer Conference 2010.9~2010.10

- . weibo architecture
- . weibo cache design
- . scale mysql
- . real-time serch
- . sina cloud

coming soon.....



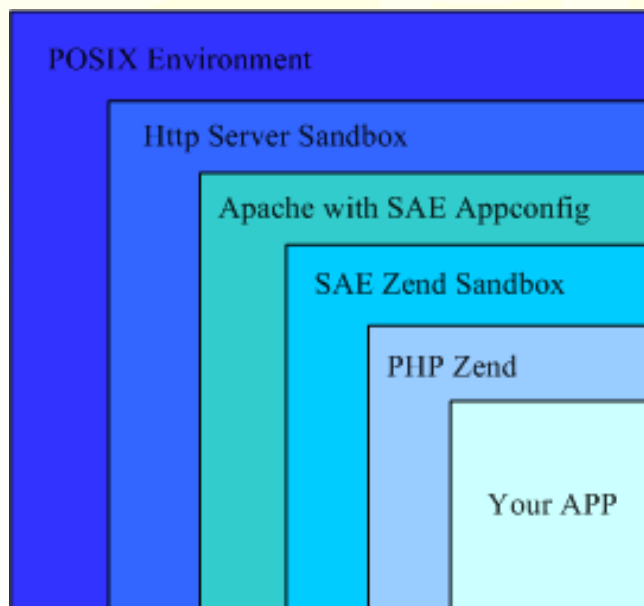
What we done





What we done

App Sandbox:



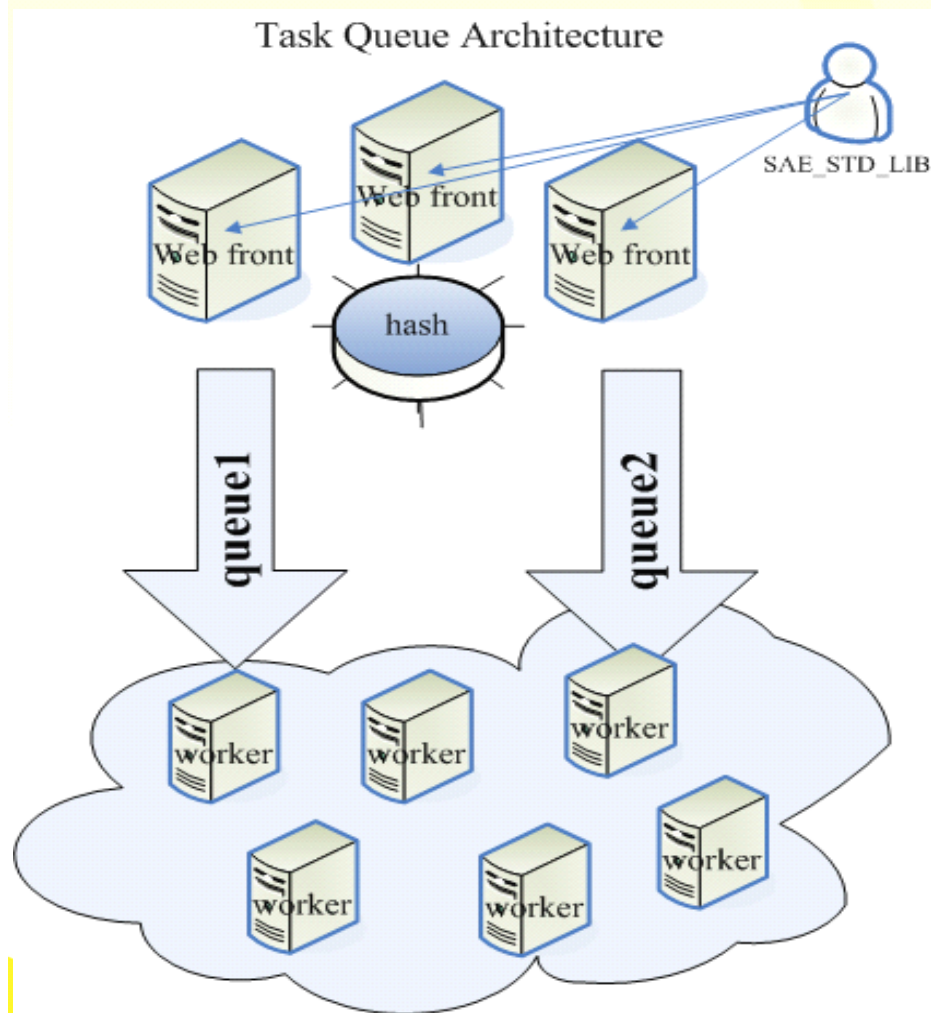


What we done

Service Type	Details
Permanent Storage	Mysql(RDC*);Stor;Sina S3
Impermanent Storage	MC;tmpfs
Async Computing	Taskqueue;DeferredJob;SMail;Cron
Sync Computing	Image;Fetchurl;ComfirmationCode(*)



What we done

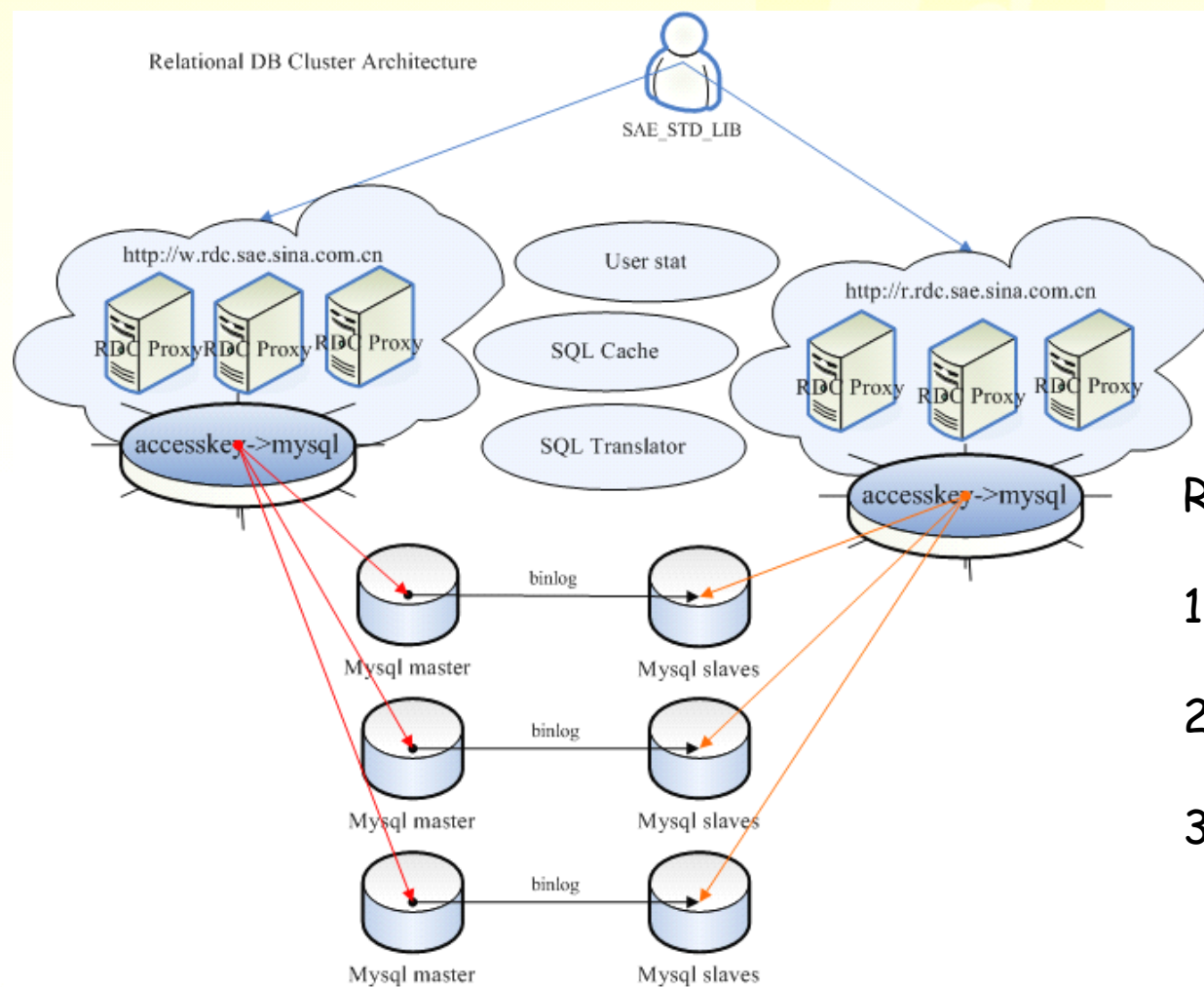


Taskqueue features:

- 1, dynamic scalability
 - . multi process + multi thread
 - . worker delay time
- 2, memory queue, master-slave sync
- 3, dead queue awake



What we done



RDC features:

- 1, mysql cluster
- 2, full mysql protocol
- 3, sql security



What we will do

SAE 让云触手可及

- No SQL DB ?
- Java, Python support ?
- C support ?
- VM support ?
- CDN support ?



感谢您 Thank you

一切由你开始

You are the One!

Conglei

"always coding"

sprewellkobe@163.com

<http://t.sina.com.cn/kobe>